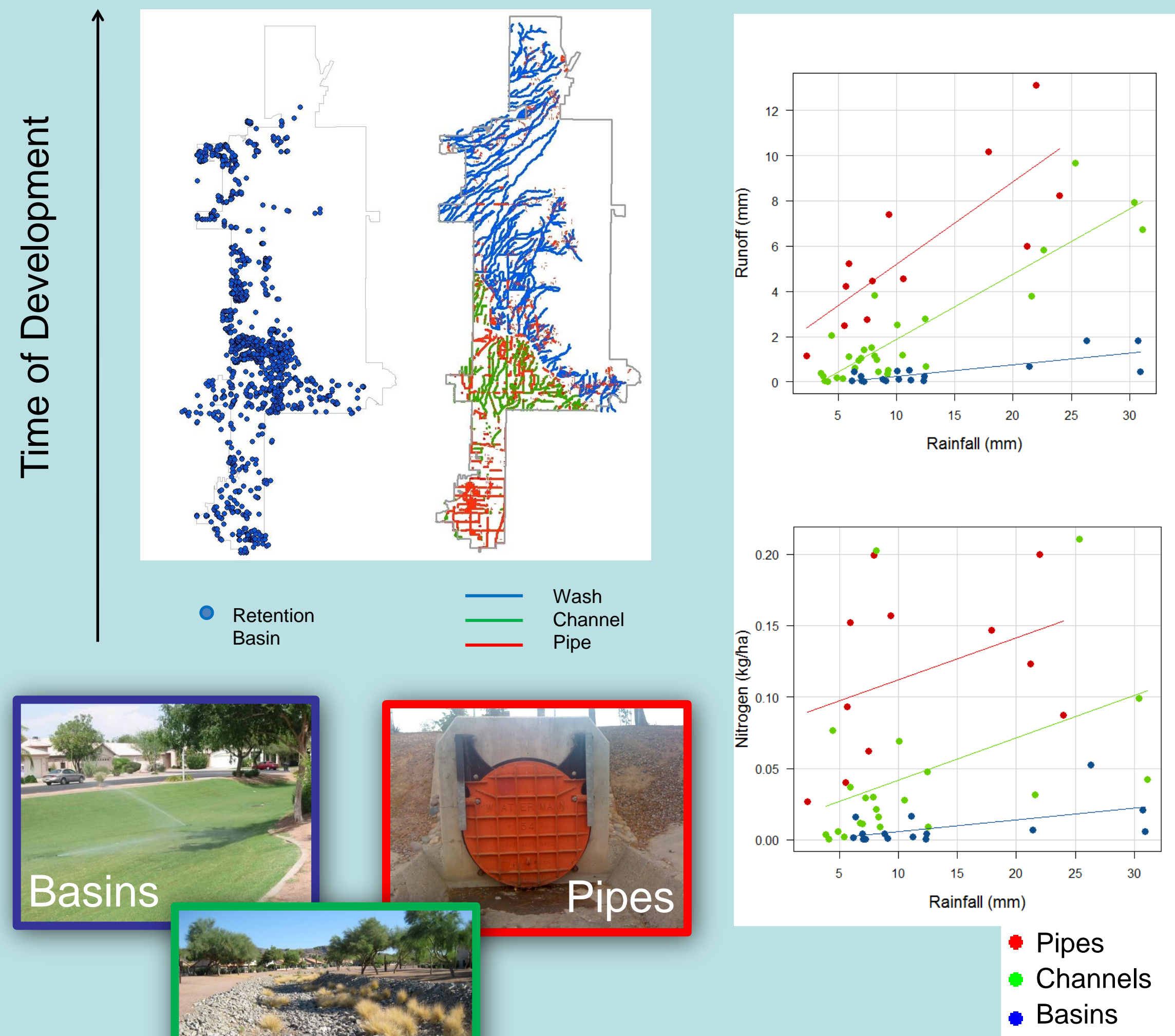


Rebecca L. Hale

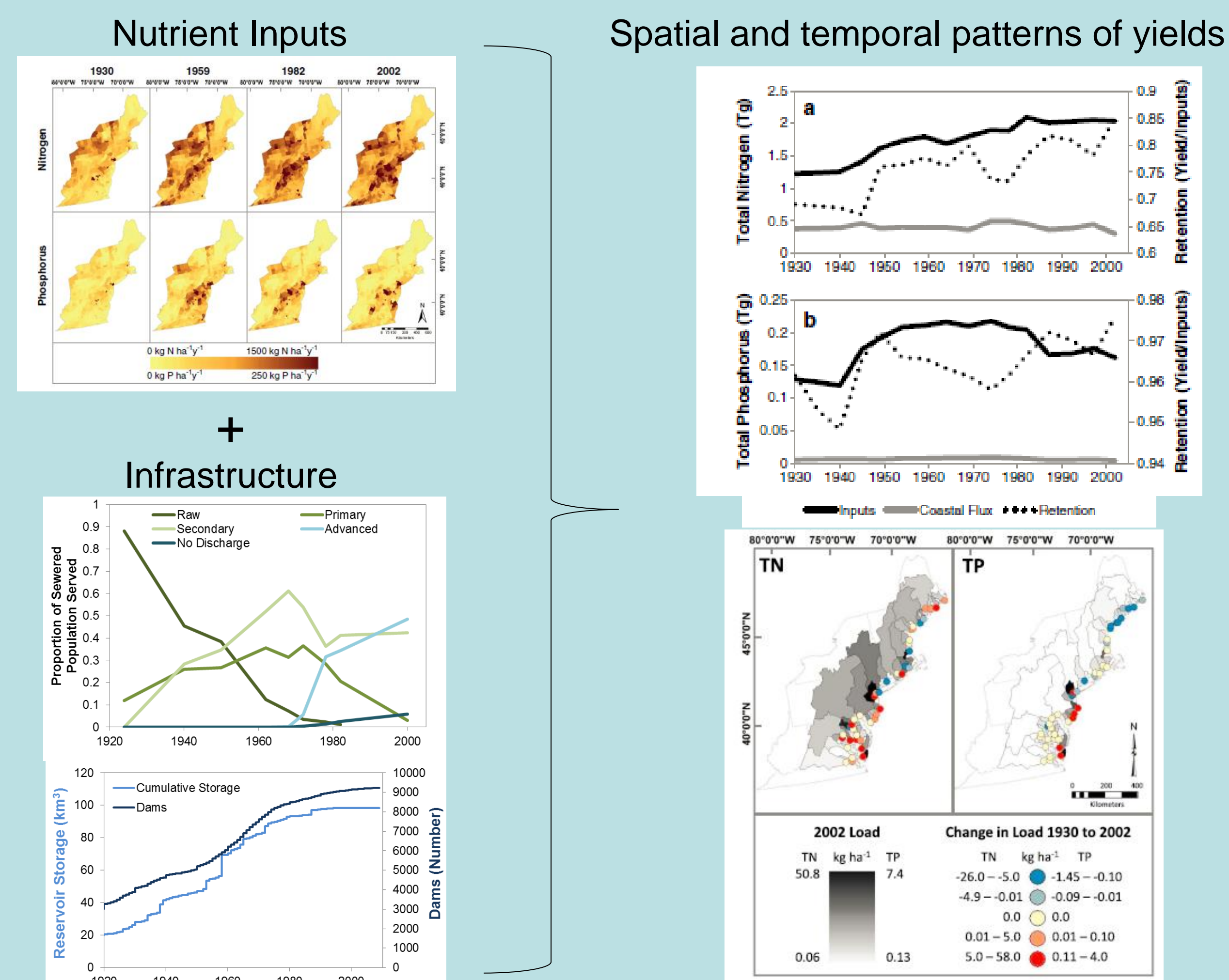
Department of Biological Sciences, Idaho State University
halereb3@isu.edu / rebeccahale.weebly.com

How do humans affect nutrients and water fluxes from watersheds?

Stormwater infrastructure drives variation in water and nutrient delivery from urban watersheds in Arizona

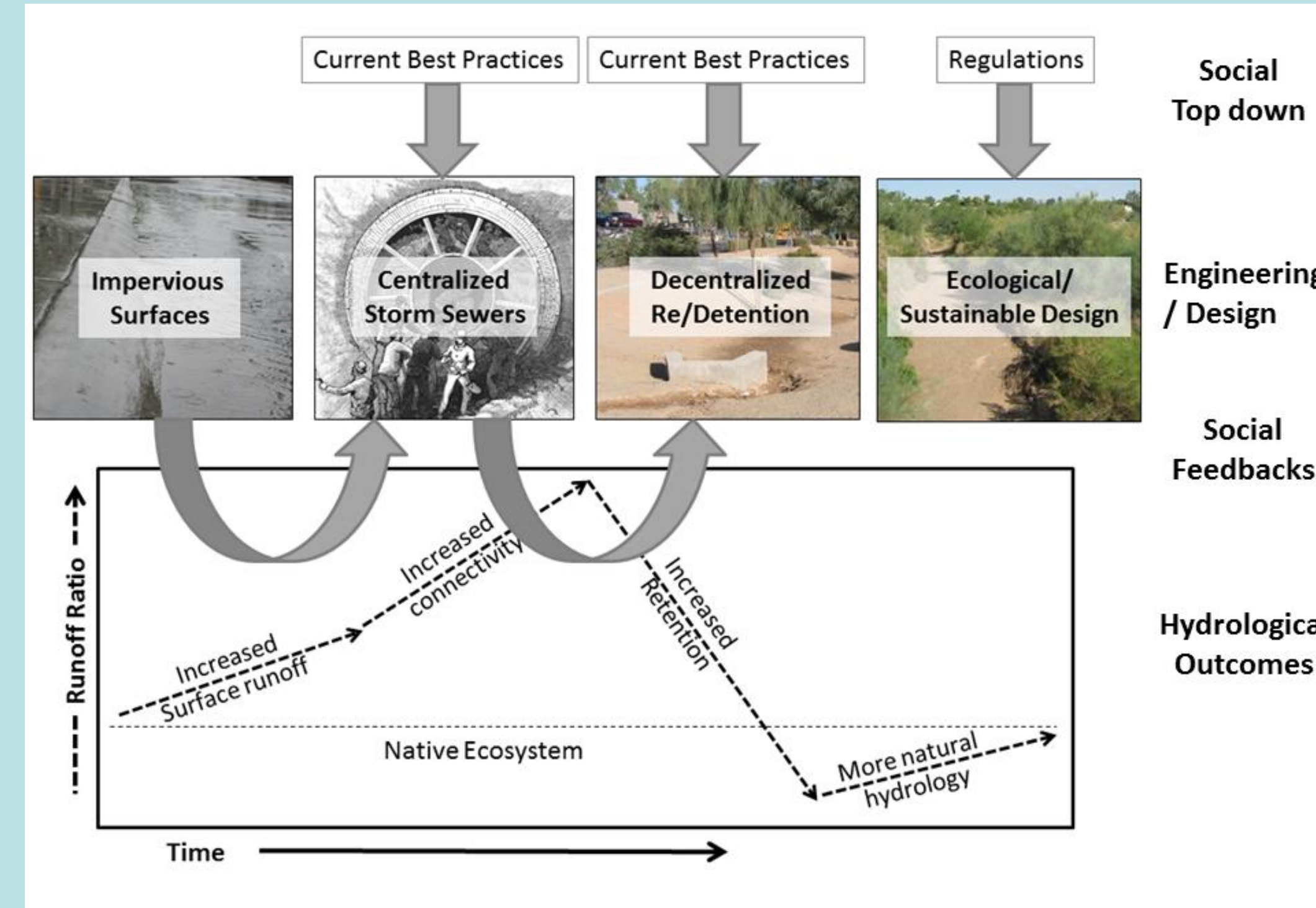


Regional nutrient yields from the northeastern US are driven by nutrient inputs, infrastructure development, and climate

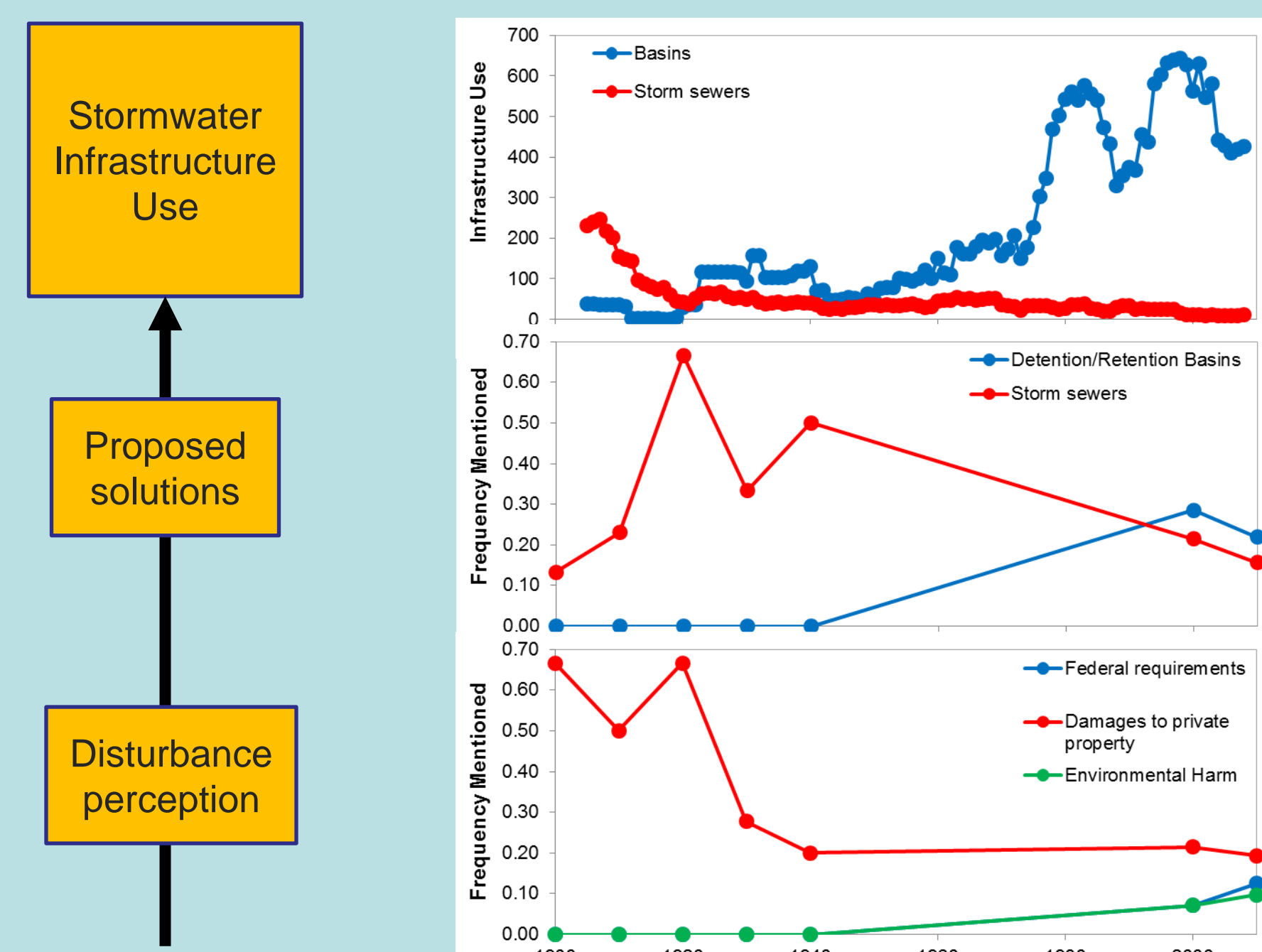


What processes lead SES to change over time?

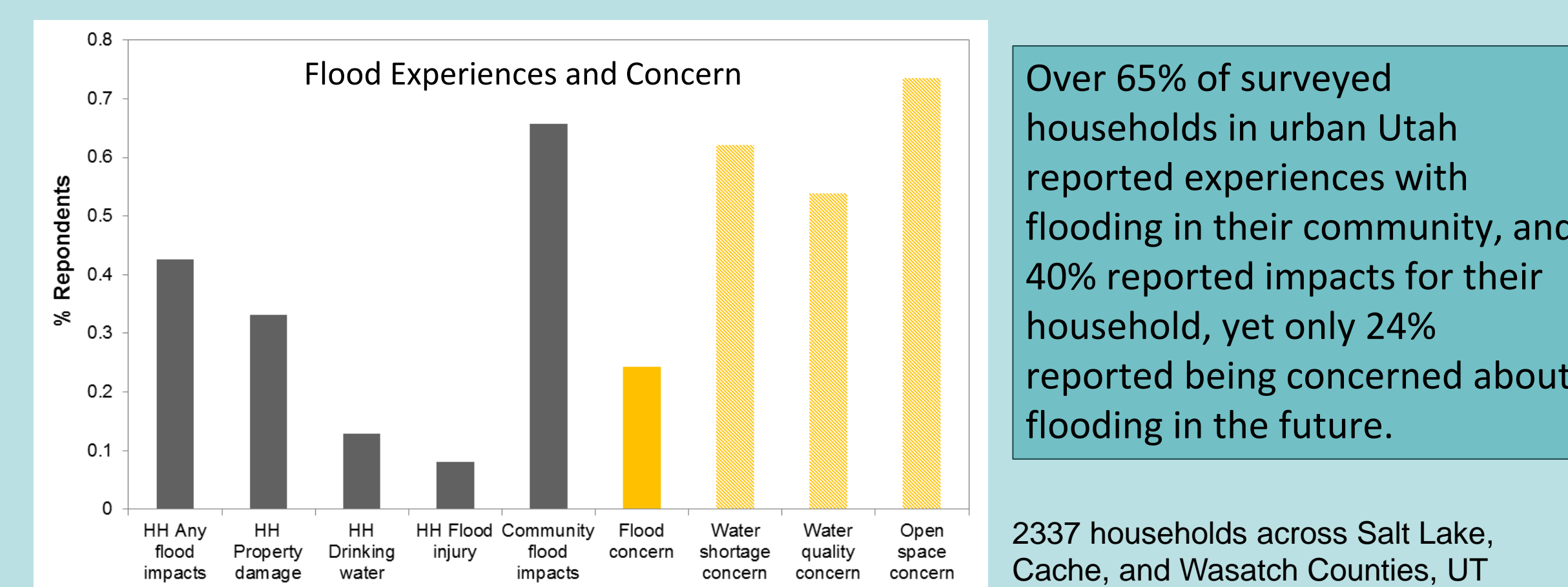
What are the roles of top-down and bottom-up drivers of change in stormwater management?



Changes in stormwater infrastructure use are related to discussions of infrastructure and stormwater-related disturbances in the media.

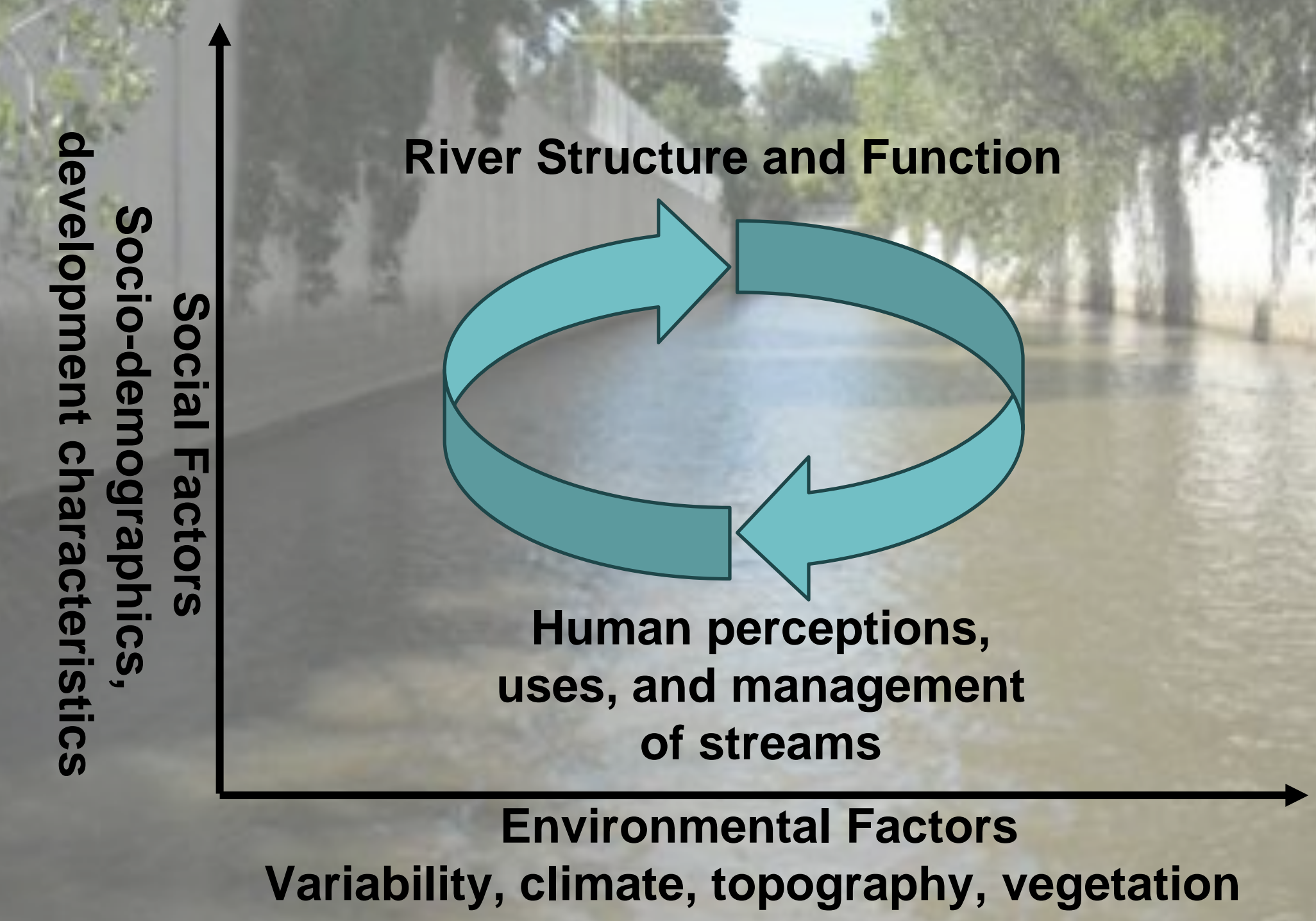


Declines in flood concerns over time does not reflect a lack of flood experiences or impacts.



Prospective MILES Research

How do social-ecological interactions vary across social and environmental gradients?



Research Themes

- How do SES linkages vary across social and ecological gradients?
 - Linkages: perceptions, uses, management, and ecology of rivers
 - Gradients:
 - Land use: urban-rural gradients
 - Stream flow permanence gradients
- How does the framing of public discourse about river ecosystems vary across communities? Are risk/hazards and ecosystem services frameworks representative of how people see their environments? How does framing of environmental issues affect management decisions?
- How does culture affect the demand (types and amount) of ecosystem services?

Many thanks to my collaborators: Nancy Grimm, Laura Turnbull, Stevan Earl, Dan Childers, Charles Vörösmarty, Wil Wolheim, Balazs Fekete, Joe Hoover, Courtney Flint, Doug Jackson-Smith, Joanna Endter-Wada, Diane Pataki

Local

Regional Scales