

MILES Treasure Valley Research

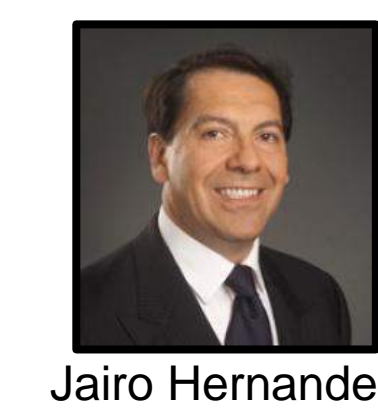
*Science supporting natural resource decision making
in the Boise River Basin*



BOISE STATE
UNIVERSITY

Alternative Futures

What are the drivers
and characteristics of
urban growth?



Jairo Hernandez



Amy Steimke

How will land
management and climate
change alter water supply?



Bangshuai Han



Jodi Brandt

How do Idahoans
value and view their
water resources?



Kay Trotter



Monica Hubbard

How do spatio-temporal
patterns influence ecosystem
service vulnerability?



Shawn Benner



Jean Barney

Statewide Activities

How will an increasing
population and changing climate
alter water availability?



Cidy Busche



Khila Dahal

How do farmers'
crop choices influence
water use?

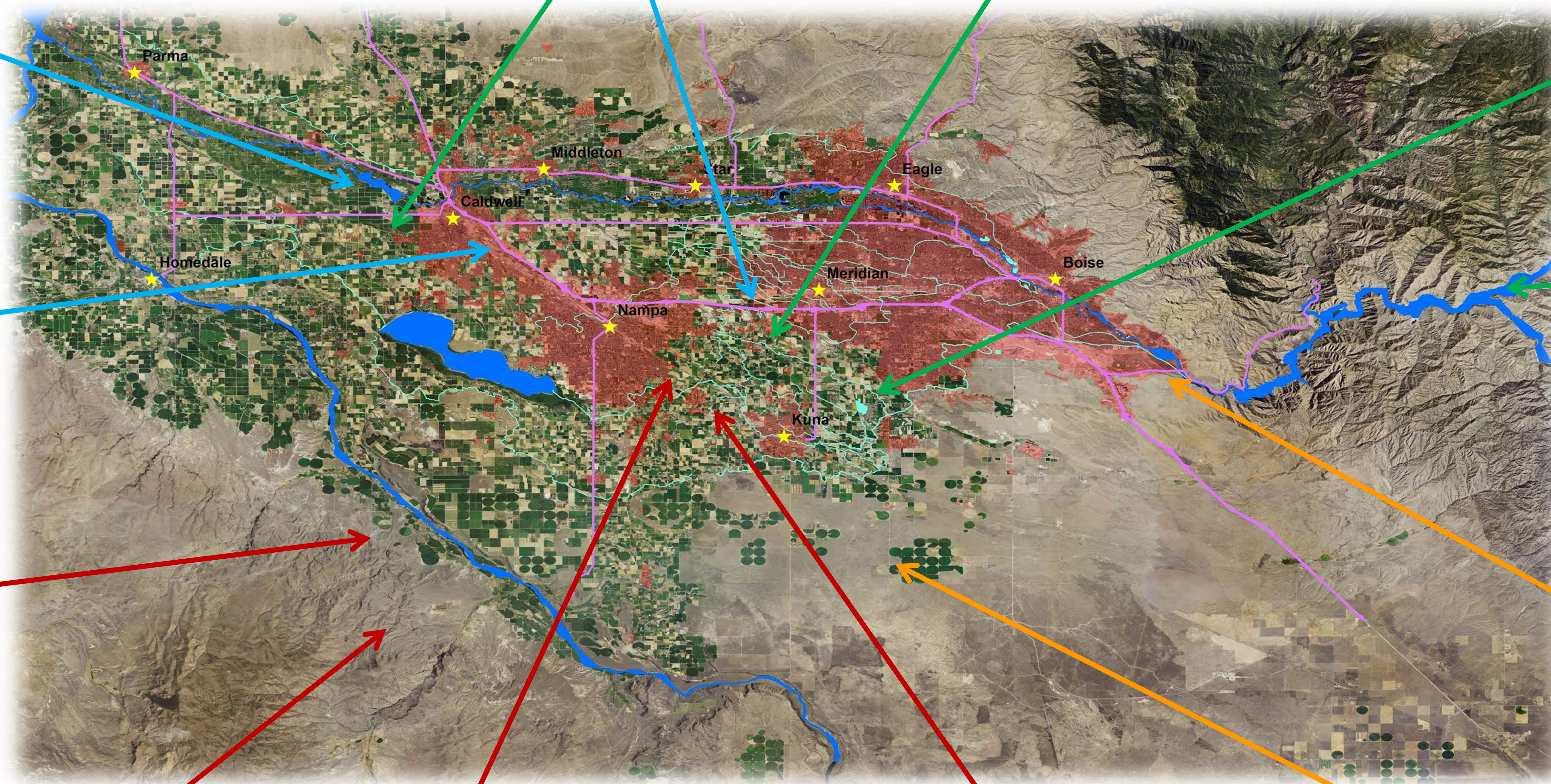


Lejo Flores

What is a rigorous
framework for natural resource
management engagement?



Andrea Leonard



How do wildlands and wildlife
influence recreation communities
and motivation?



Michail Fragkias



Liz Paul



Ben Pauli



Julie Heath

What sociological
factors influence recreation
decision making?



Josh Johnston



Kathryn Demps

What ecological processes
affect the resiliency of a system
to recreation impacts?



Neil Carter

How are wildlife
affected by recreation?



Carl Anderson

How do competing
water management jurisdictions
influence decision making?



Jen Schneider



Erik Olson

How do nonprofit
conservation organizations
use science?



Jared Talley

Boise River Basin Water Management

Wildlands and Recreation

Color-shaded questions are currently MILES supported